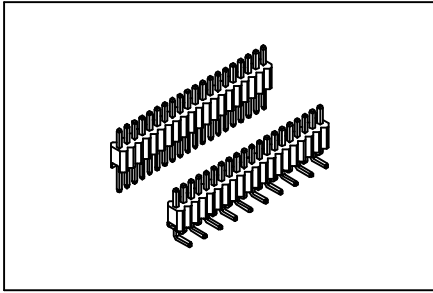


Pin Header 1.27mm(0.050")

GXCON



Material:

Housing: High temperature housing withstands IR and VPR soldering methods.

Contacts: Brass.

Plating: Gold plated over nickel.

Tin plated over nickel.

Selective gold plated: Gold plated on mating area and tin plated on solder tail.

Electrical Characteristics:

Current Rating: 1 AMP.

Insulator Resistance: 5000MΩmin. at DC 500V.

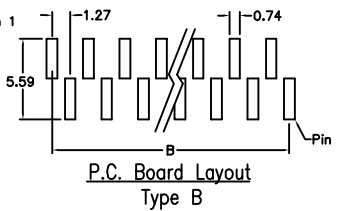
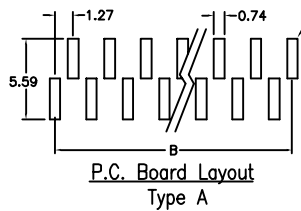
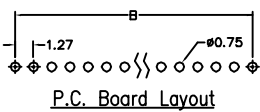
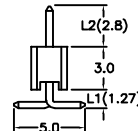
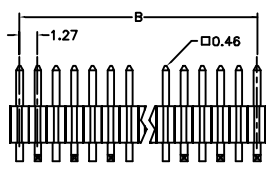
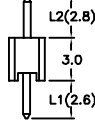
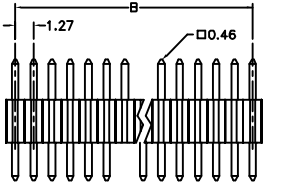
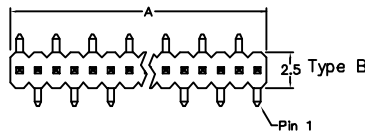
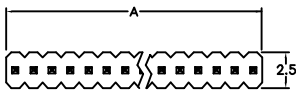
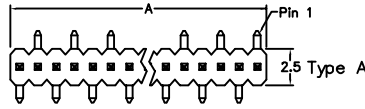
Contact Resistance: 20mΩmax. at DC 100mA.

Operating Temperature: -65°C~+125°C.

Max Processing Temperature: 230°C for 30~60 seconds.

Features:

- * Choice of through-hole and surface mount.
- * Low profile 3.00mm(0.118")
- * Custom design offered.
- * Two different foot print for Surface Mount design.



Position	3 Thru 32
Dimension	
A	1.27 X No. of Positions
B	1.27 X No. of Positions -1.27

Ordering information

PH23-	1	32	1	1	A /L1 /L2
Series	Single Row	No. of Pin Per Row	3: Selective Gold Plated 1: Gold Plated 2: Tin Plated	1: Straight 3: Surface Mount	*Foot Print Type A & B

Custom Design: Straight (i.e. PH23-13211/L1 /L2)
Surface mount (i.e. PH23-13213A/L1/L2)